

The high value of the video game market continues to attract many companies. But few have the research and development capabilities or resources to produce a winning system. CBS Electronics has those capabilities and CBS Colecovision is the system.

Already one of America's best selling video game systems. The technologically advanced CBS Colecovision system has been developed in tandem with extensive consumer research.

CBS Colecovisions' advanced technology gives superlative graphic resolution and sound effects which combine to produce greater on-screen realism.

A realism previously only found on large format arcade games.

CBS Colecovisions' hand controllers have been specifically designed

Atari® and VCS™ are trade marks of Atari Inc. Turbo™ is the trade mark of Sega Enterprises.

to incorporate excellent fingertip game play control through the 8 direction joystick and 2 fire action buttons.

In addition to being a game playing unit, the CBS Colecovision console can be expanded via the unique Expansion Module Interface.

So when other systems are outdated CBS Colecovision will still be going strong.

Expansion modules available in 1983 will include an Atari® converter module, a Turbo Driver Module™ and an advanced Home Computer Module.

We feel that the time and care put into developing and researching CBS Colecovision will help make it the most popular video game system in Britain.

CBS
ELECTRONICS



WHEN IT COMES TO VIDEO GAMES,
IT CAN'T BE BEATEN.

COLECO

A new system with excellent graphics and great potential

The Colecovision is billed as a third generation games system because of its memory capacity, its graphics quality, and its expandability.

One thing is evident: Coleco have done their homework and learned from the mistakes made by Atari and Mattel.

The console has a bigger memory (32k) than a VCS and an Intellivision put together. They have also produced a very good initial software range in which arcade games are well featured, with licences from top arcade names like Sega, Universal and Bally/Midway. With the excellent graphics and large memory some very good conversions are possible.

The Colecovision console has space for two all-in-one multi-purpose controllers, which include an eight direction joystick, a touch sensitive twelve button keypad, and two independent 'fire' buttons. These controllers are detachable so that others can be used, or a faulty one exchanged. When not in use, the whole thing packs neatly away.

As it comes, it's an excellent piece of equipment, with a slot for its own type of games cartridges, made by CBS Electronics. They alone will take full advantage of all that the unit offers. On the front of the console is another slot, labelled 'Expansion Module Interface' and called by Colecovision their

'window on the future'.

This is where you can add an impressive array of additional goodies. Firstly, and available now, is a Turbo module. This is a large controller which includes a steering wheel and a foot operated accelerator, while one of the ordinary controllers fits into it with the joystick acting as a gear lever. Currently it comes with a road race game, but it is so elaborate that other uses are bound to follow.

A second module due out shortly will enable Colecovision owners to plug in and play their Atari cartridges. This will give the new Colecovision owner a choice of over two hundred games - the Coleco



Consumer research has shown that the most popular software cartridges are those based on arcade game formats.

CBS Electronics have available some of the most popular arcade games and offer an exclusive range of software titles.

Through exclusive licensing agreements with major arcade game manufacturers CBS Electronics has access to many of the top earning arcade games and can convert them for video use.

The nature of these licensing agreements is such that CBS Electronics can produce their exclusive games in the Atari® VCS™ Mode and Mattel Intellivision™ mode as

well as for CBS Colecovision Video Game System. Maximum technology is built into every cartridge to produce the best possible visual and audio effects when played on compatible hardware.

Software cartridges available in 1983 include Donkey Kong, Venture, Smurf, Cosmic Avenger, Mousetrap, Ladybug, Carnival, Turbo, Zaxxon, Gorf and Wizard of Wor.

The very nature of the arcade game business dictates that new, hot selling games will become available in the near future and these will be converted to video game format by CBS Electronics as soon as possible. It's for these reasons CBS Electronics are confident at beating the leaders at their own game.

CBS
ELECTRONICS

Atari® and VCS™ are trade marks of Atari Inc. Intellivision™ is the trade mark of Mattel Inc.



WHEN IT COMES TO VIDEO GAMES,
WE CAN'T BE BEATEN.

COLECO SYSTEM REVIEW

range, together with the entire selection for the Atari.

Where a Coleco version exists this will give the superior picture that Coleco can produce, but Atari have collected some very good games in the past and their version is often the only one available. You just fit the adaptor, plug in the cartridge and play, using the Coleco controllers.

There are also a couple of sockets for special Atari controllers, so all your extra joysticks can still be used. We haven't had a chance to get our hands on one of these adaptors for the kind of thorough testing we like to give new equipment, but it seems possible that this unit would allow

you to use Atari controllers on the Colecovision's own games, should anyone want to. Details will be published as soon as available.

Another module which is promised is a typewriter keyboard which will convert the console into a respectable home computer. Since it has already got a reasonable amount of memory built-in, as well as the bits and pieces necessary to produce a screen display better than many computers can achieve, then the combination may well prove to be a serious contender for anyone

who wants to expand to a computer without abandoning the high quality picture they are used to.

This is the most recent TV game system, indeed it's only just coming on the market now. Remembering that the Atari is still being developed some five years after its designers thought they had finished, then the Colecovision must yet have a good few surprises in store. And once thousands of users start experimenting to find its limitations, they will probably find a few tricks of their own.

If you do, write in and tell us and we'll share your hints and tips with other gamers.



CARNIVAL **PREVIEW**

COL74302 CBS Electronics £29.95
SHOOT 'EM UP

This game sets out to recreate the charm and excitement of an old time shooting gallery. You have to shoot down the toy ducks, bears and rabbits as well as the clay pipes at the top of the screen. You have limited ammunition which the ducks will try to eat if they get too low on the screen. The graphics and sound are far superior to those in either the VCS or the Intellivision versions. There is also a bear shoot which doesn't appear in the other versions. □

COSMIC AVENGER

COL74310 CBS Electronics £29.95
SCI FI SHOOT 'EM UP **PREVIEW**

Rather like the arcade game Scramble, Cosmic Avenger is a scrolling multi-phase shoot 'em up in which you fly over the landscape using lasers and bombs to destroy everything in sight. The graphics and sound effects are very good indeed and the game should appeal to all Scramble fans and Space gamers. □

DONKEY KONG

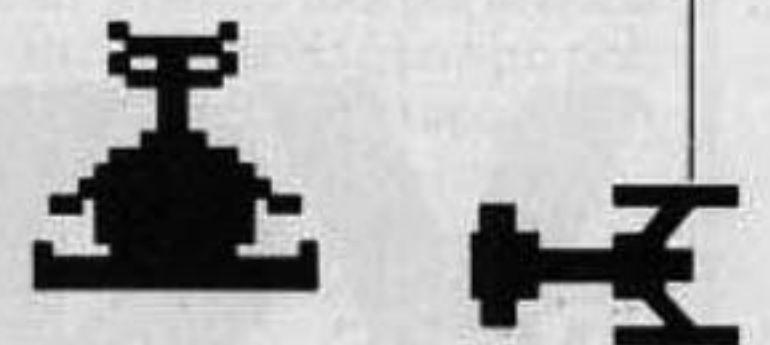
CBS Electronics Free with console
CLIMBING

This is the game that comes free with the Colecovision when you buy it. Naturally, they have chosen a cartridge that shows off the system to good advantage, and this game certainly does that. The game is based on the arcade game Nintendo, which has almost a cult following in America. The Kong in the title is King Kong, by the way, and the idea of the game is to guide a little character called Mario to the top of a skyscraper to rescue his girlfriend from Kong's clutches. To do this he has to climb scaffolding around the building. However, all the time little Mario is climbing up, Kong is busy throwing barrels down. Mario has to jump over them ... or you start again with another little Mario! The resemblance to the coin-op version is quite staggering, and although CBS Electronics make versions of this game for both Atari and Intellivision, neither of them are comparable in quality. We were so impressed with Kong that we got our artist to draw him for our front cover! □

GORF **PREVIEW**

COL74344 CBS Electronics £29.95
SCI FI SHOOT 'EM UP

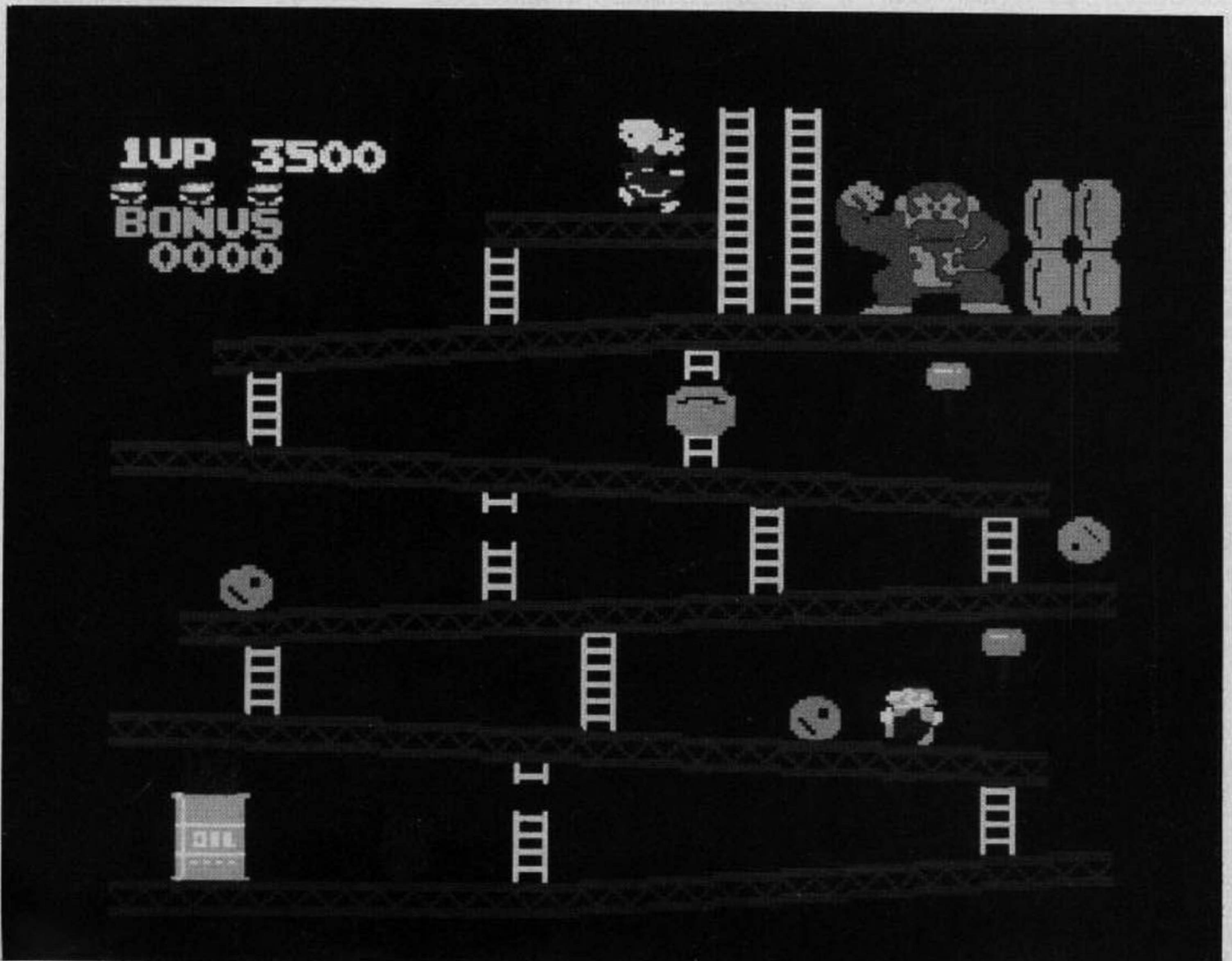
A popular coin-op that has survived the translation to Coleco very well, as most arcade games do. The idea in Gorf is to shoot your way through several different phases of interstellar conflict. For a more detailed account of game play see Intellivision and VCS versions. □



LADY BUG **PREVIEW**

COL74328 CBS Electronics £29.95
MAZE

A run of the mill Pac-Man-type game but with a difference. Some of the walls are hinged and will move if pushed by your Lady Bug, so you can if you like change the maze - or better still, block off your pursuers. Worth buying if you're desperate for Pac-Man on the Coleco system. □



Donkey Kong

MOUSETRAP ★

COL74294 CBS Electronics £29.95
MAZE

A Pac-Man-type game, although of a much higher calibre, which comes accompanied by an up tempo melody that's really very good. In Pac-Man's place is a little mouse that zooms around the maze eating cheese crumbs, while being chased by some cats and a bird. If the mouse eats a Power Pill, located in each of the four corners, he turns into a dog and can chase the cats. This game runs rings round Pac-Man. □



WIZARD OF WOR

COL74351 CBS Electronics £29.95
SCI FI SHOOT 'EM UP **PREVIEW**

As with most of the games that CBS Electronics produce the game play is much the same as in both VCS and Intellivision versions but the graphics and sound are superior. The Coleco version is very faithful indeed to the arcade game. □

TURBO ★

COL74518 CBS Electronics £49.95
DRIVING

Based on an arcade game - as are most titles these days - but with a difference. Instead of having to shoot everything in sight, your driving skills are put to the test in a break-neck speed chase. The game comes complete with a driving controller, consisting of a steering wheel, foot accelerator and hand controller which acts as a gearstick. The great thing about this game is the constant change of settings. Starting off in a city, the scene progresses through countryside, desert, winding roads, tunnels, even making a brief trip to the sea-side. Well worth the initial outlay since the controller is included and visually it is the most exciting driving game around. □

SMURF - RESCUE IN GARGAMELS CASTLE ★

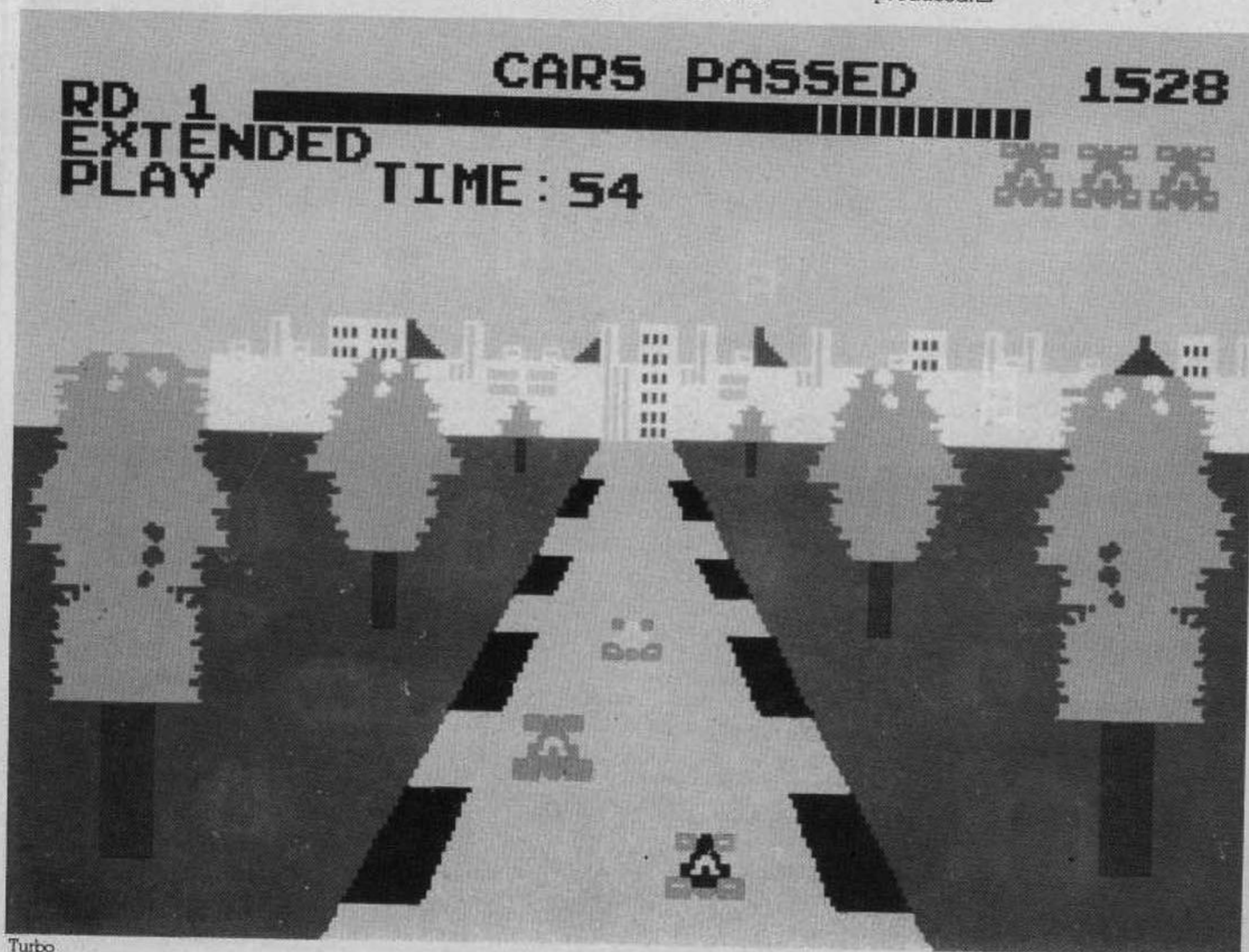
COL74260 CBS Electronics £29.95
CHILDREN'S ADVENTURE

This game is based on the highly popular TV characters. You have control of a little Smurf who must make the epic journey to Gargamels Castle to rescue an imprisoned Smurfette. Along the way you must jump gates and hills and duck to avoid bats. Both the graphics and sound on this game are marvellous. Children will love it. □

ZAXXON ★

COL74278 CBS Electronics £29.95
1+1 4 variations
SCI FI SHOOT 'EM UP

This game is based on the popular coin-op by Sega. With control of a small Starfighter armed with a front laser, you must fly across a series of Space Platforms destroying all the installations as you go. After leaving each platform you have a brief flight in space and a space dog-fight with enemy fighters. This is the only game on the market that scrolls diagonally and Coleco really have made a convincing job of it. The graphics and sound are superb. All in all, this is about the best video game translation from arcade to home so far produced. □



Turbo